



PURPOSE BUILT, THREE BEDROOM APARTMENT with TWO ALLOCATED UNDERGROUND PARKING SPACES, LIFT ACCESS, OPEN ASPECT VIEWS & SOUTH FACING BALCONY! Boasting over 1,100 Sq ft of internal living accommodation, this is an excellent opportunity to acquire a three-bedroom apartment located on the second floor of Fernwood, Jesmond. Positioned between both Fernwood Road and Clayton Road, Fernwood is a purpose built block constructed in 1984 and is well placed to access the local shops, cafes and restaurants. Jesmond Metro Station is also only a short walk away, providing excellent access throughout the region.

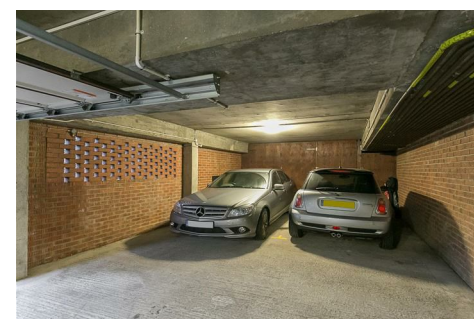
Offered to the market with no onward chain, the internal accommodation briefly comprises: communal entrance with secure telephone entry and lift access to second floor floor; spacious entrance hall; impressive 24ft lounge diner with dual aspect windows, feature fireplaces and door access to south facing balcony, with views over the communal gardens; kitchen breakfast room, again with dual aspect windows, kitchen area with fitted wall and base units, work surfaces and including feature spot lighting; three bedrooms, bedroom one with walk in bay, fitted wardrobe storage and fully tiled en-suite bathroom; bedroom two also with fitted wardrobe storage; shower room, complete with three piece suite and fitted storage.

Externally, the property offers two allocated underground parking spaces along with visitors parking and well manicured lawned communal gardens. Double-glazed throughout, available immediately and rare to the market, an early viewing comes highly recommended!

Second Floor Apartment | 1,108Sq ft (103.0m²) | Three Bedrooms | Impressive 24ft Lounge to Diner with Dual Aspect | SouthFacing Balcony | Kitchen | Bathroom & En-Suite | Two Allocated Underground Parking Spaces | Communal Gardens | Fantastic Location | Rare To The Market | EPC Rating: C

Offers Over £345,000

IMPORTANT NOTE: These particulars and the descriptions and measurements herein do not constitute representation and whilst every effort has been made to ensure accuracy, this cannot be guaranteed.



2ND FLOOR
1108 sq.ft. (103.0 sq.m.) approx.

